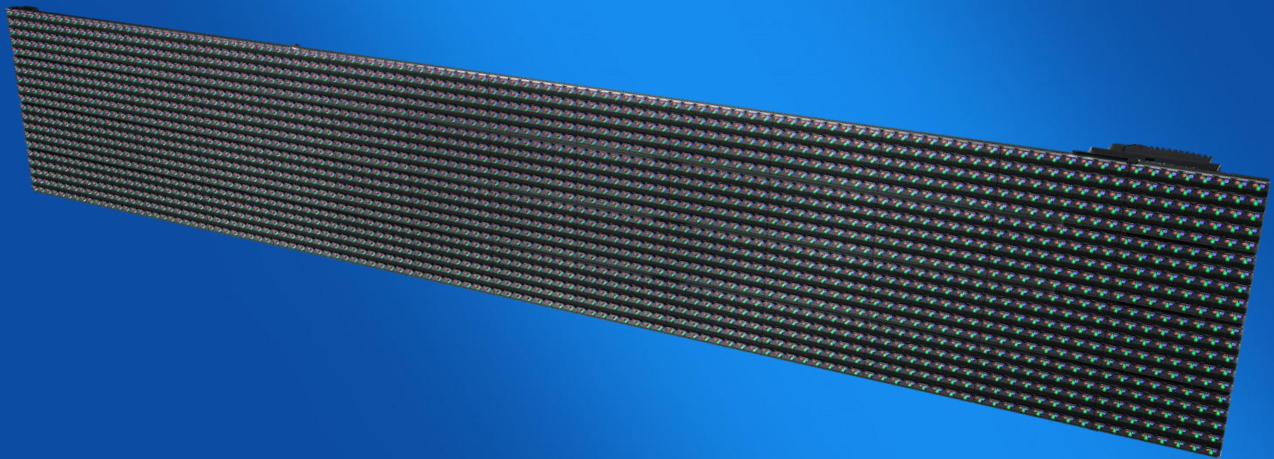
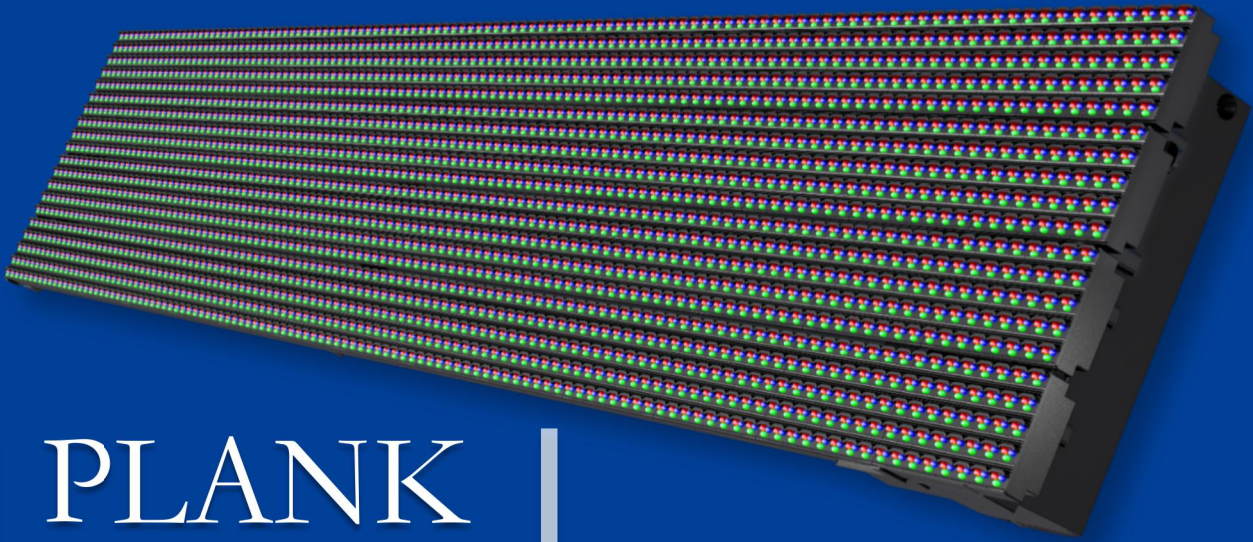


T SERIES

PRODUCT MANUAL





PLANK DISPLAY T Series | T-13C |

2021-V1.0



LIGHT Light and Slim

Light weight, 24.6kg/m², easy for installation and maintenance



SELF-COOLING Self-Cooling

Whole aluminum structure, reserve gap for heat dissipation, no heat accumulation, achieve self-cooling. Gap design can reduce wind load and keep good sunshine volume indoor



NO STEEL Zero Steel Structure

No structural or simple structure design, steel weight save around about 50kg/m².



FRONT FIX Front and Rear Maintenance

Available for front and rear installation, extremely enhanced products ability for all kinds of installation environment.



LOW ENERGY Low Power Consumption

High brightness LED and PFC, low power consumption



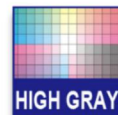
IP67 High Protection Level

Ground breaking product as the first IP67 protection level for whole LED screen, extend lifetime for LED screen



ALL-WEATHER All Weather Environment

Working in -30°C to 60°C environment without malfunction, and strong wind withstand capacity.



HIGH GRAY High Gray Level

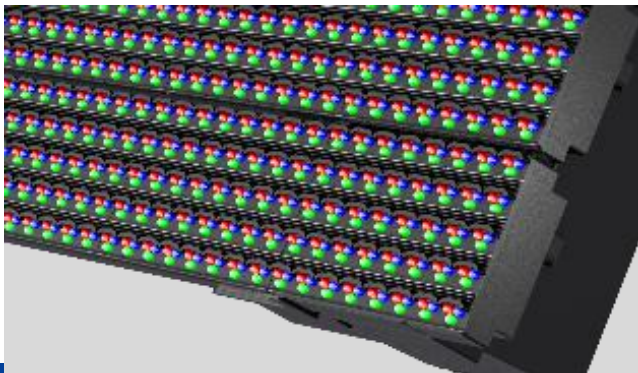
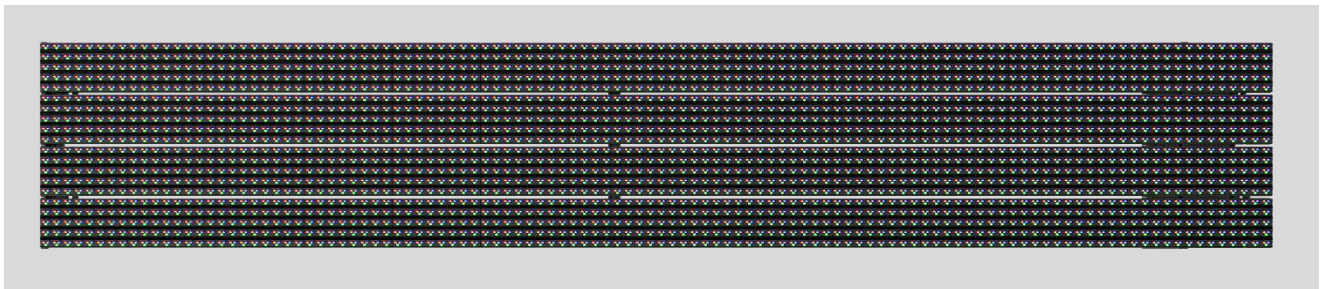
Reduce brightness at night won't affect display gray level, reduce light pollution and save power.

Product Specification

Product Type	T-13C
Body Material	Aluminum & PC Mask (appearance color can be customized)
LED	DIP346 (1R1G1B) (R≥2000mcd, G≥4000mcd, B≥900mcd)
Pixel Pitch	13.71 mm /12.8 mm
Resolution	5700 dot/m ²
Panel Orientation	Horizontal Vertical
Standard Panel Size	1536 × 256mm (H); 256 × 1536mm (V). Length can be customized.
Resolution/Panel	112 × 20 dot(H); 20 × 112 dot(V);
Brightness	6000–7000 nit
Transparent Rate	6%
Weight	24.6 kg/m ²
Input Voltage	AC 110 –240 V
Maximum Power Consumption	400 w/m ²
Installation and Maintenance	Front or Rear
IP Grade	IP67
Grey Level	RGB 65536 colors (3 × 16bit)
Refresh Rate	≥3840 Hz
Frame Rate	≥60 Hz
Working Environment	Temperature: –30°C to +60°C; Humidity: 10%–90%

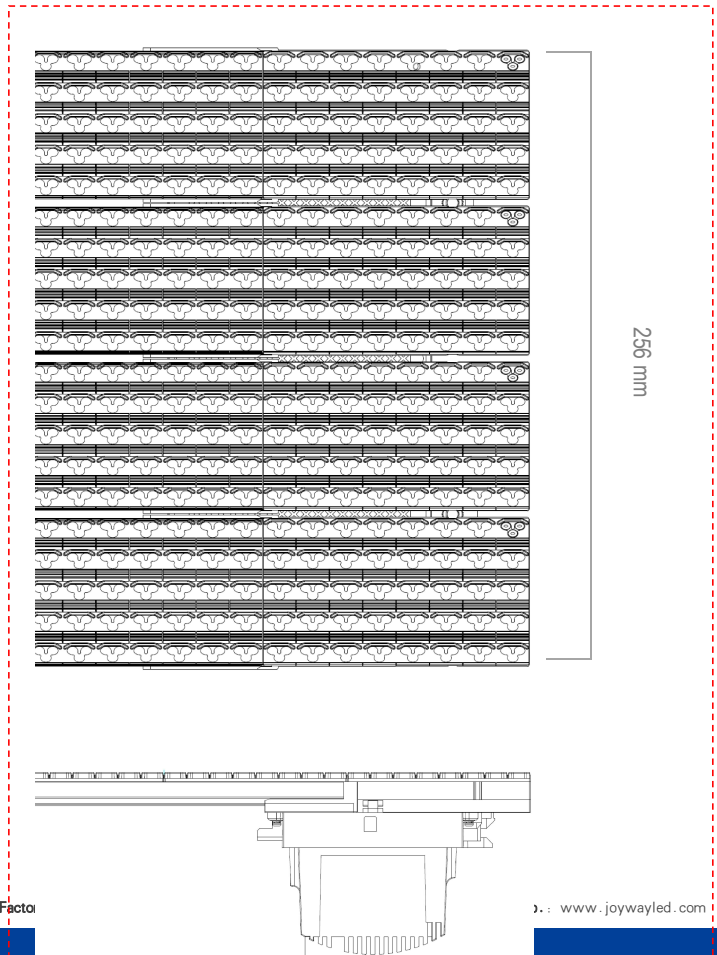
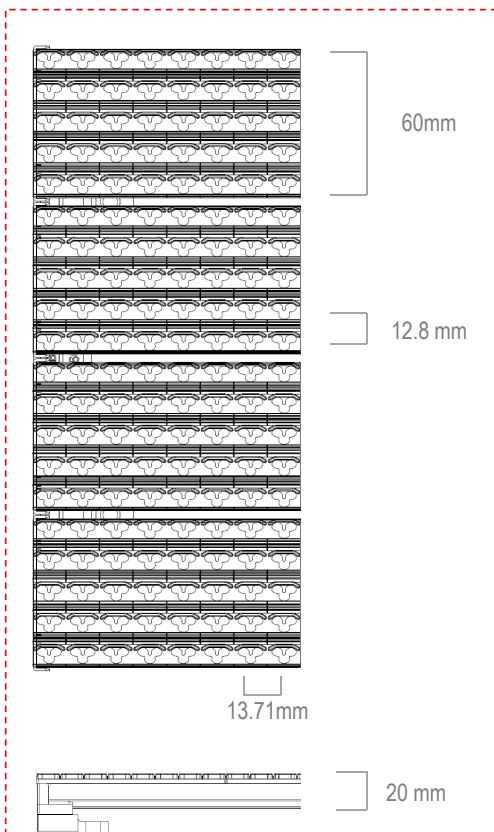
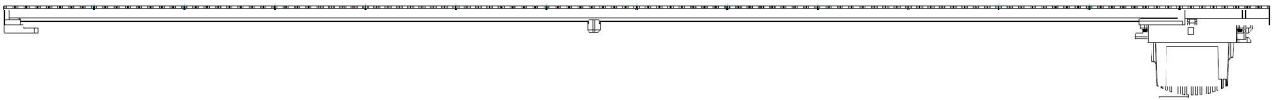
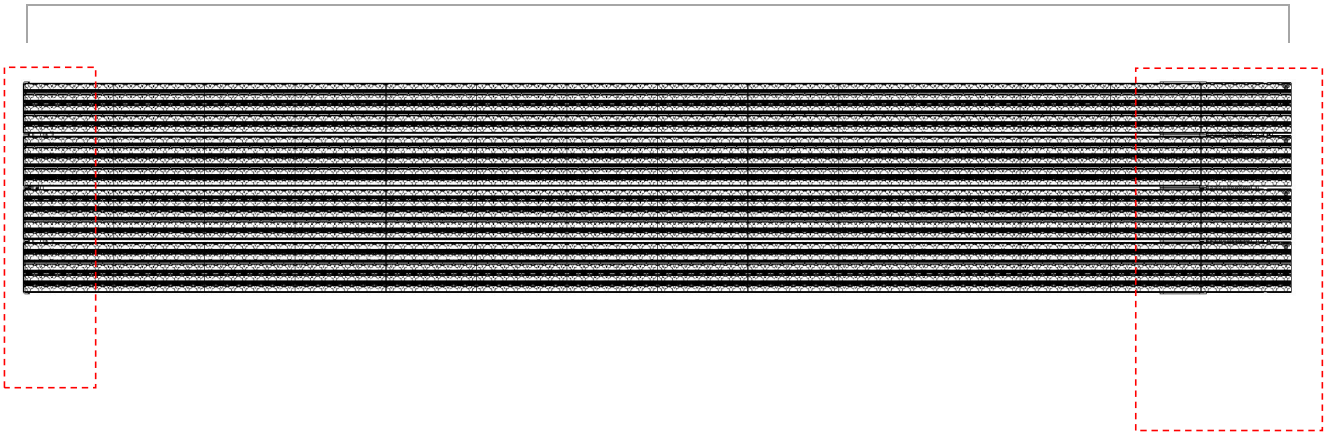
※ Parameters would be adjusted according to specialized project requirements.

PRODUCT APPEARANCE



PANEL DIMENSIONS

1536mm



110 mm

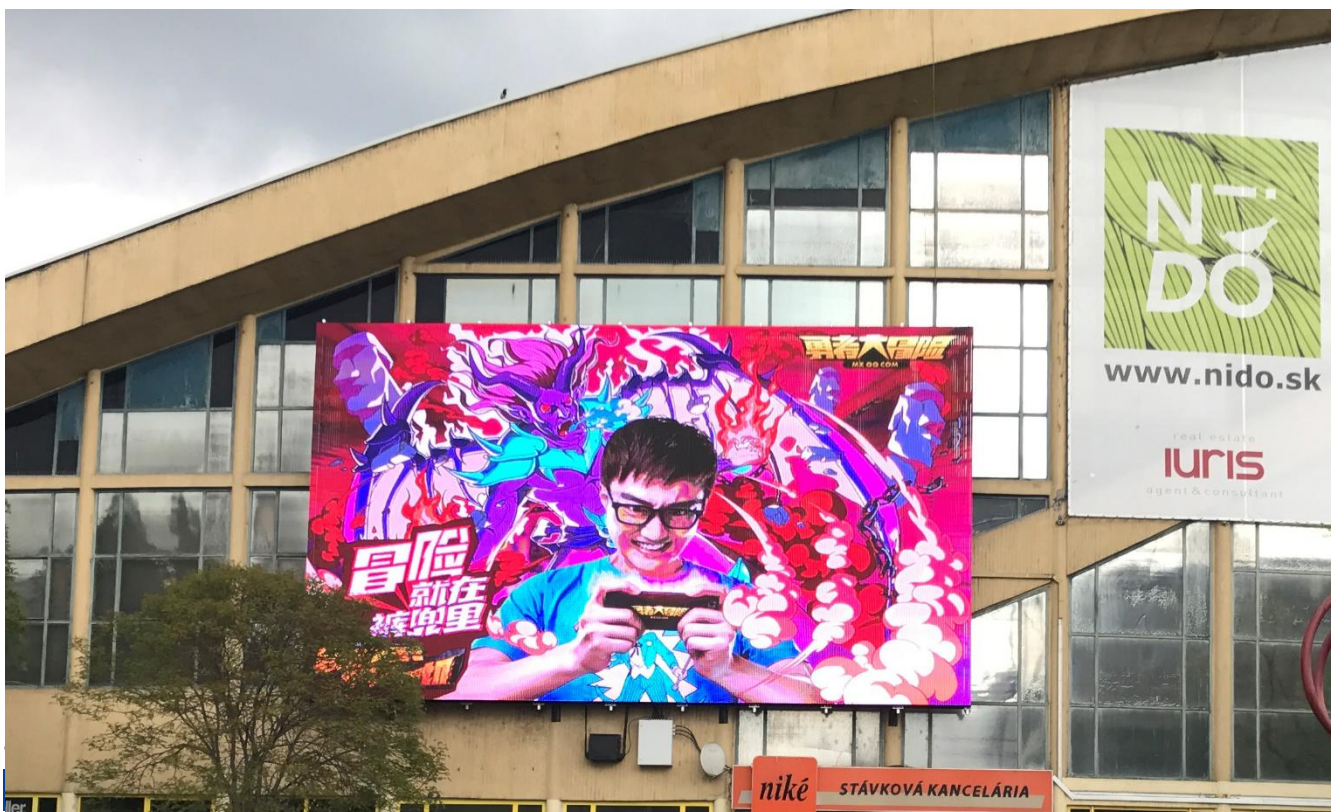
- Note:
1. Above panel size is standard size of T-13C, panel length is customizable, panel height can not be changed.
 2. Panel orientation can be horizontal or vertical according to project requirement.

CASE REFERENCE



Copenhagen, Denmark

Size: 96 m² Time: 2016.4 Location: Copenhagen, Denmark



Unilumin
洲明文创 | JOYWAY

SHENZHEN UNILUMIN JOYWAY TECH CO., LTD