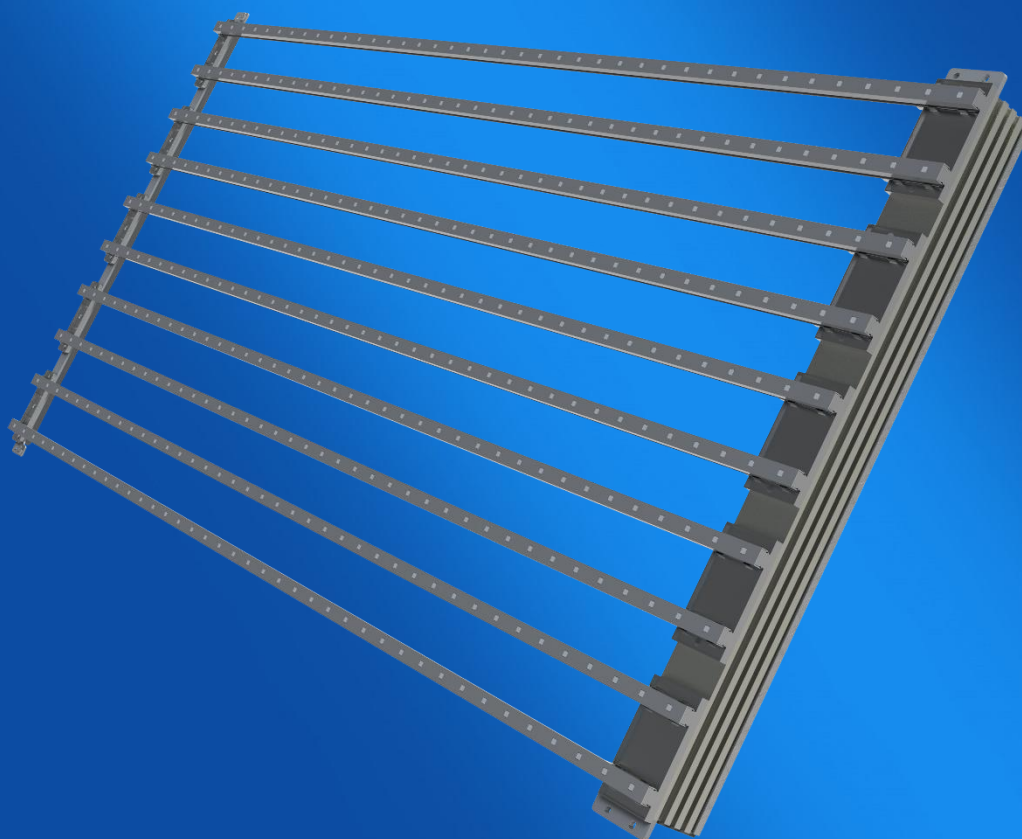


**N** SERIES

# PRODUCT MANUAL



# MediaGrille®

## Night Time Screen



# MEDIA GRILLE | N Series | N-5050 |

2021-V1.0



### High Transparency

78% transparent rate, turn building façade into LED media facade



### Light and Slim

Light weight, 6.4kg/m<sup>2</sup>, easy for installation and maintenance



### Hanging Mounting

Hanging or mounting, simple structure and low cost



### Specialized for Night Economy

Specialized for Night Economy, Low cost for outdoor display application



### Low Power Consumption

High brightness LED and PFC, low power consumption



### High Protection Level

Ground breaking product as the first IP67 protection level for whole LED screen, extend lifetime for LED screen



### All Weather Environment

Working in -30°C to 60°C environment without malfunction, and strong wind withstand capacity.



### Front and Rear Maintenance

Available for front and rear installation, extremely enhanced products ability for all kinds of installation environment.

**Product Specification**

Product Type	N-5050
LED	SMD 3535 (R $\geq$ 680mcd, G $\geq$ 1600mcd, B $\geq$ 345mcd)
Body Material	Aluminum & PC Mask (appearance color can be customized)
Pixel Pitch	50mm/50mm
Resolution	400 dot/m <sup>2</sup>
Panel Orientation	Horizontal/Vertical
Standard Panel Size	1000 × 500mm
Resolution/Panel	20 × 10 dots
Brightness	1500 nit
Transparent Rate	78%
Weight	6.4 kg/m <sup>2</sup>
Input Voltage	AC 110 –240 V
Maximum Power Consumption	195w/m <sup>2</sup>
Installation and Maintenance	Front or Rear
IP Grade	IP67
Grey Level	RGB 16384 bit (3 × 14bit)
Refresh Rate	$\geq$ 1920 Hz
Frame Rate	$\geq$ 60 Hz
Working Environment	Temperature: -30°C to +60°C ; Humidity: 10%–90%

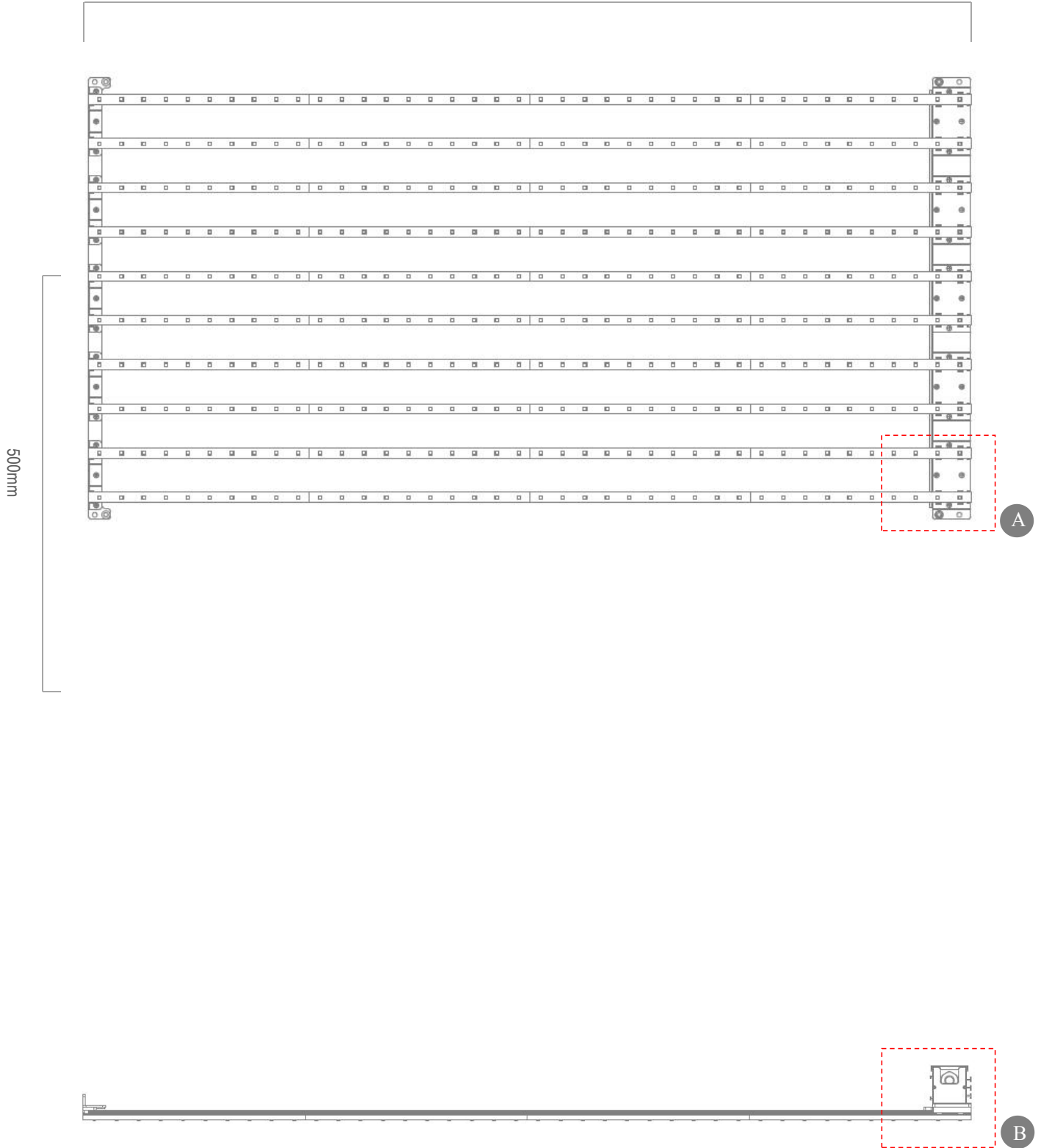
※ Parameters would be adjusted according to specialized project requirements.

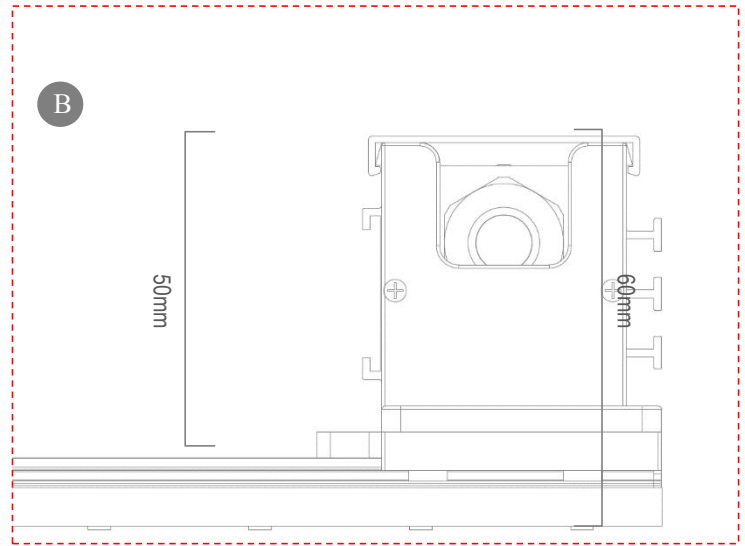
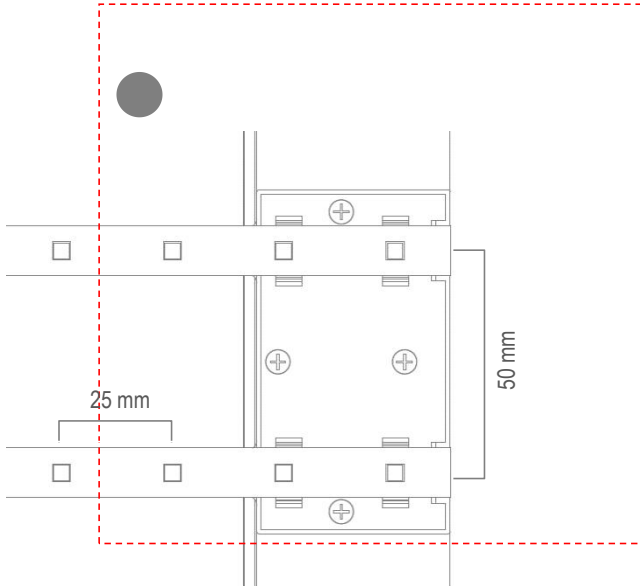
**Product Appearance**



Panel Dimensions

1000mm

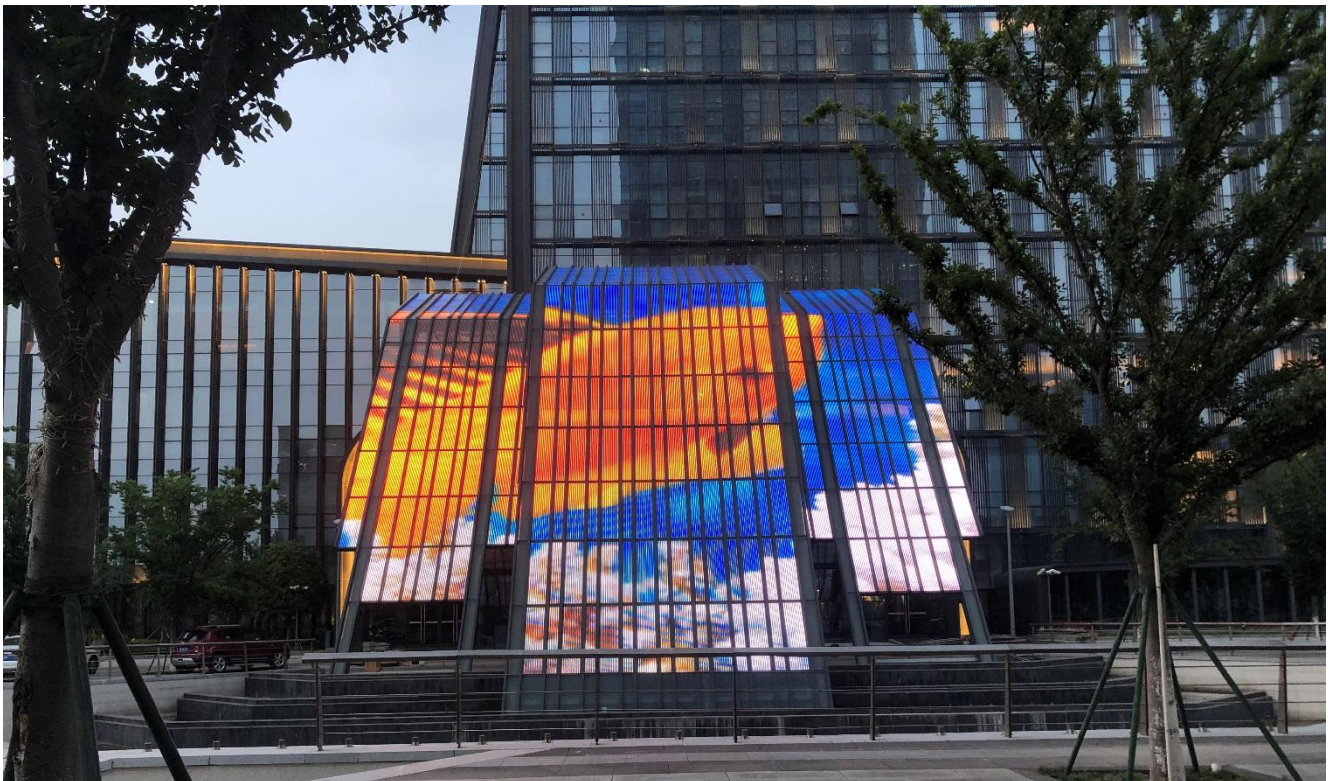




Note: Above panel size is standard size of N-2550, panel length is customizable, panel height can not be changed.

CASE REFERENCE





Suzhou High Speed Train Town

Size: 324 m<sup>2</sup> Time: 2020.5 Location: Suzhou, Jiangsu, China

**Unilumin**  
洲明文创 | JOYWAY

SHENZHEN UNILUMIN JOYWAY TECH CO., LTD